

BELLMOUTH QUICK DISCONNECT RING

As an industry leader in special test equipment, MDS enables its clients to improve testing efficiency around the globe. The Bellmouth Quick Disconnect Rings are quickly becoming a standard production tool for engine OEMs to easily, quickly, and safely connect and disconnect the engine bellmouth. MDS provides full integration support in terms of evaluation, design, and supply of the equipment to tailor this special product to your unique facility and engine testing requirements in both the production and development arenas.

Benefits:

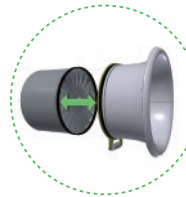
- Increased test cell throughput
- Guaranteed alignment
- Improved worker safety through automation
- Quick connection and disconnection
- Improved fan case access
- Minimized test cell down time

Design:

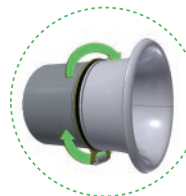
- Electrical or hydraulic actuation (hand pump provided for hydraulic)
- Bellmouth locking time of 2 – 5 minutes
- Complete PLC automation available
- A rotating collar is positioned and retained over the bellmouth adapter and is connected by a hydraulic cylinder

Operation:

1 THE TWO SUBASSEMBLIES ARE BROUGHT TOGETHER AXIALLY USING ALIGNMENT PINS.



2 THE ROTATING RING IS HYDRAULICALLY ACTUATED TO ITS LOCKED POSITION.



3 TWO OPPOSING WEDGES COME IN CONTACT AND GENERATE A CLAMPING FORCE THAT SECURES THE BELLMOUTH TO THE ENGINE.

